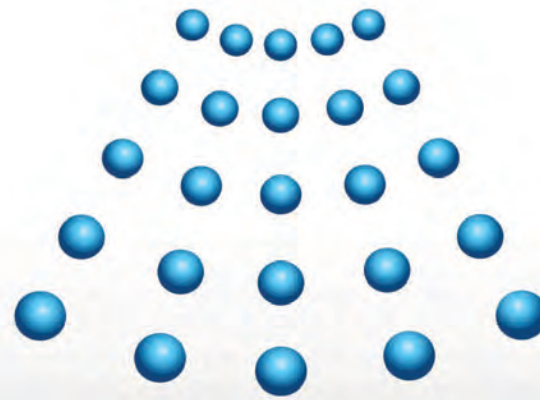


**ADVANCED
SOLUTIONS
TO MAXIMIZE
CROP OUTCOMES**





To the plant, On the
plant, In the plant.
**Now that's performance
made easy.**



**A spray adjuvant with Leci-Tech "To-On-In" gives
you more of what you want on the inside.**

Make pesticides and foliar nutrients more effective by adding one of the many Leci-Tech adjuvants by Loveland Products. The exclusive technology of Leci-Tech suppresses spray drift and produces more performance-sized droplets for better coverage. Leci-Tech is also formulated to ensure maximum adhesion and leaf penetration. That's performance for superior results.

www.lovelandproducts.com

© 2018 Loveland Products Inc. Leci-Tech is a registered trademark of Loveland Products, Inc.
Always read and follow label directions. check product label as not all adjuvants are registered in all states.



Watch Leci-Tech get
To your plants, On your plants
and In your plants, easy.

Nutrien
Ag Solutions™



Adjuvant



CHOICE® TRIO is a non-AMS liquid water conditioner designed to aid in the performance of herbicides susceptible to the negative effects of hard water. CHOICE TRIO performs via three modes of action: sequestering, chelating, and complexing of all hard water cations.

GROWER BENEFITS:

- Reduces effects of hard water on herbicide performance without the use of AMS
- Effective on all hard water cations
- Can be used in applications where AMS is not recommended but water conditioning is required

RATES:

1-2 qts/100 gals spray solution

TARGET CHEMISTRIES:

Herbicides

FEATURES:

- Water conditioner: Sequestering; Synthetic chelating; & Complexing
- Non-AMS formulation

ALWAYS READ AND FOLLOW LABEL DIRECTIONS



CHOICE® WEATHER MASTER is a water conditioning agent for use with agricultural chemicals. Designed for hard water conditions, this liquid formulation locks up hard water cations allowing maximum herbicide performance. Compatible with all formulations of glyphosate.

GROWER BENEFITS:

- Reduces effects of hard water on herbicide performance
- Bind multiple hard water cations, such as calcium, manganese, magnesium and potassium
- Convenience of treating 1000 gals with 2½ to 5 gals of liquid instead of 100 to 200 lbs of dry product

RATES:

1-2 qts/100 gals of water (before adding pesticides)

TARGET CHEMISTRIES:

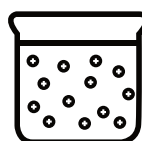
Glyphosate

FEATURES:

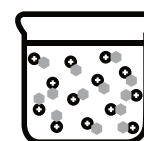
- Water conditioner
- Multiple Sequestering and Complexing agents
- Liquid formulation

ADJUVANT

Action of Choice® Weather Master in hard water



Hard water with cations



Addition of certain active ingredients actually "lock-on" to the cations.



The addition of **CHOICE Weather Master** results in it "locking-on" to the hard water cations. This prevents hard water cations from interfering with the herbicide performance.

● Hard water cations ● Active ingredient ● CHOICE Weather Master

ALWAYS READ AND FOLLOW LABEL DIRECTIONS



COMPADRE® is a non-ionic, non-foaming, and shear tolerant drift control agent containing suspended antifoam/defoamer. Compadre may be used as a drift control adjuvant to enhance deposition, retention and control spray droplet size of agricultural and industrial chemicals.

GROWER BENEFITS:

- TO: Drift reduction with performance-sized droplets
- ON: Droplet retention by adhesion and spreading
- IN: Increased penetration without cuticle disruption
- Contains an antifoam/defoam system
- Low use rates make COMPADRE cost-effective

RATES:

1 pt/100 gals of spray solution

FEATURES:

- Contains LECI-TECH, a unique technology that assists overall spray performance
- Non-ionic formulation
- Shear-tolerant

TARGET CHEMISTRIES:

Loaded Glyphosate Formulations

Reduce Drift and Reach Your Spray Target with Performance-Size Droplets



Demonstrates in simulated wind, coarse droplets of; water alone (left), water with glyphosate (middle), and water with glyphosate and Leci-Tech® (right).

ALWAYS READ AND FOLLOW LABEL DIRECTIONS



For growers or custom applications who want to minimize the variability in performance of strobilurin fungicides, **FRANCHISE**[®] is specially formulated for use when spraying fungicides on crops that are experiencing stress. Unlike traditional surfactants, **FRANCHISE** is specifically formulated for use with strobilurin chemistries.

GROWER BENEFITS:

- TO: Drift reduction with performance-sized droplets
- ON: Droplet retention by adhesion and spreading
- IN: Increased penetration without cuticle disruption
- Consistently minimizes variability of strobilurin performance
- Proprietary formula is particularly helpful to plants experiencing stress

FEATURES:

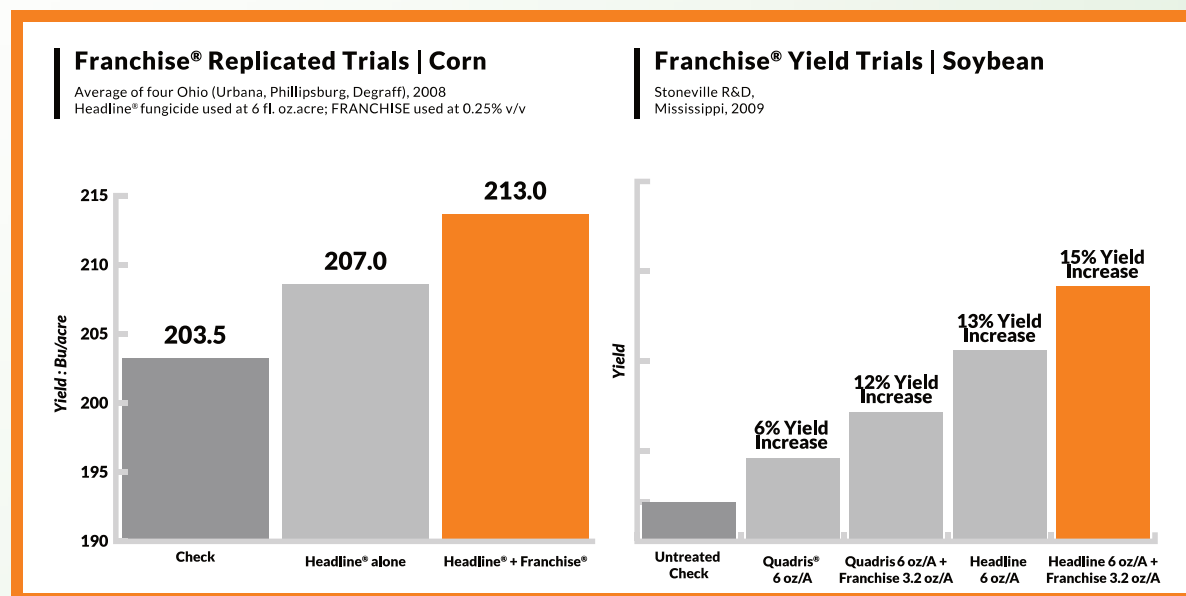
- Contains LECL-TECH, a unique technology that assists overall spray performance
- Can be applied by ground or air
- Liquid formulation

TARGET CHEMISTRIES:

Strobilurin Fungicides

RATES:

1-2 qts/100 gals of spray mixture or 3-4 oz/A for aerial application



ALWAYS READ AND FOLLOW LABEL DIRECTIONS



HERBIMAX® is a premium oil/surfactant that increases penetration and the activity of post-emergence herbicides.

GROWER BENEFITS:

- Premium multi-component oil/surfactant system
- Fertilizer-compatible emulsifier stabilizes spray tank solution
- Increases herbicide penetration of the plant surface

RATES:

1-4 pts/A

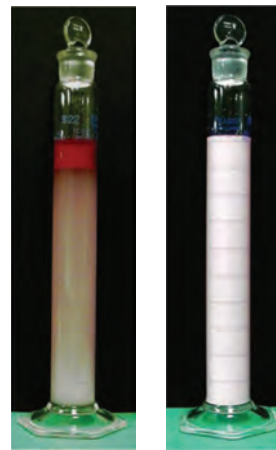
TARGET CHEMISTRIES:

Post-Emergence Herbicides

FEATURES:

- Can be applied by ground or air
- Petroleum-based oil
- Easy-to-use, non-foaming formulation allows easy tank mixing and clean out of the spray tank

Emulsion Stability



After sitting for 10 minutes, Herbimax®, on the right, holds a spray mixture together; competitive product's emulsion, left, broke down.

ALWAYS READ AND FOLLOW LABEL DIRECTIONS



LIBERATE® is an uptake enhancing surfactant blend. Liberate is designed for use with pesticides that recommend a non-ionic surfactant, and works especially well with systemic chemistry, reducing driftable fines.

GROWER BENEFITS:

- TO: Drift reduction with performance-sized droplets
- ON: Droplet retention by adhesion and spreading
- IN: Increased penetration without cuticle disruption
- Contains an antifoam/defoam component and will not cause foaming problems in the spray tank

RATES:

1-4 pts/100 gals of spray solution

FEATURES:

- Contains LECI-TECH, a unique technology that assists overall spray performance
- 100% active and odorless
- Target chemistries include sulfonyl urea herbicides, fungicides and those chemistries requiring a neutral pH

TARGET CHEMISTRIES:

Herbicides, Defoliants, Desiccants; Insecticides, Fungicides, Acaricides, Plant Growth Regulators

LECI-TECH® Increased Penetration



Demonstrates the effect of Leci-Tech chemistry on spray solutions by retaining more of the "performance-sized" droplets on the waxy leaf surface of Common Lambsquarters. Clay solution was used for a visual indicator.

ALWAYS READ AND FOLLOW LABEL DIRECTIONS



MSO® CONCENTRATE WITH LECI-TECH® is a methylated seed oil containing the highest quality components available. The premium emulsifiers, along with LECI-TECH chemistry, will provide uniform mixing for excellent performance as well as drift reduction, enhanced penetration and droplet adhesion. MSO CONCENTRATE WITH LECI-TECH is designed for use with post-emergent herbicides and has consistently demonstrated increased penetration over conventional crop oil concentrates.

GROWER BENEFITS:

- TO: Drift reduction with performance-sized droplets
- ON: Droplet retention by adhesion and spreading
- IN: Increased penetration without cuticle disruption
- Delivers increased plant uptake vs. standard MSO formulations

RATES:

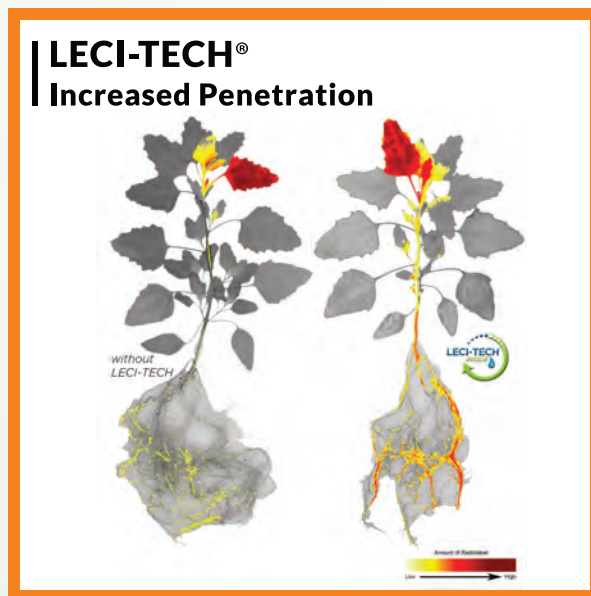
1-4 pts/100 gals of spray solution

TARGET CHEMISTRIES:

Post-Emergent Herbicides

FEATURES:

- Contains LECI-TECH®, a unique technology that assists overall spray performance
- Formulated with premium emulsifiers



ALWAYS READ AND FOLLOW LABEL DIRECTIONS



STRIKE FORCE is a proprietary adjuvant specifically researched & developed for your D-Treated (Dicamba & 2,4-D tolerant crops) acre. Containing patented technology, STRIKE FORCE is designed to maximize performance.

GROWER BENEFITS:

- TO: Drift reduction with performance-sized droplets
- ON: Droplet retention by adhesion and spreading
- IN: Increased penetration without cuticle disruption
- Water conditioning without AMS
- Bulk handling capabilities

FEATURES:

- Contains LECI-TECH, a unique technology that assists overall spray performance
- Formulated as a Deposition Aid, Drift Control Agent, Penetrant, Antifoaming & Defoaming Agent and Water Conditioning Agent

TARGET CHEMISTRIES:

Dicamba and 2,4-D Tolerant Crops

RATES:

2 qts/100 gals spray solution
(minimum 10 GPA)

Strikeforce® Maximizes Dicamba Performance on D-treated Crops When Mixed with Approved DRA Like Reign®*

Acidifier	Antifoam/ Defoam	Deposition Aid/Sticker	Drift Control	Penetrant	Spreader	Water Conditioner	OTHER-see description	Description
								LECI-TECH® chemistry specifically formulated to be used with the D-Treated (Dicamba & 2,4-D tolerant) crops.

* = Use approved tank mix products and DRA according to latest dicamba manufacturer labels. As always, please read and follow labeled directions for specific products being used.

ALWAYS READ AND FOLLOW LABEL DIRECTIONS



WEATHER GARD COMPLETE is a proprietary crop-based formulation containing a drift reduction agent, antifoam/defoamer, penetrant and water conditioner in one easy-to-use liquid formulation. Formulated and approved for use with all potassium salt-based glyphosate products.

GROWER BENEFITS:

- TO: Drift reduction with performance-sized droplets
- ON: Droplet retention by adhesion and spreading
- IN: Increased penetration without cuticle disruption
- Minimizes effects of hard water ions that can inhibit herbicide performance
- Stops & eliminates foam buildup for easier spray tank fills

RATES:

1-2 qts/100 gals of spray solution

FEATURES:

- Contains LECI-TECH, a unique technology that assists overall spray performance
- 100% active and odorless
- Target chemistries include sulfonyl urea herbicides, fungicides and those chemistries requiring a neutral pH

TARGET CHEMISTRIES:

Potassium Salt-Based Glyphosate

**To Effectively Treat
1,000 Gallons of Water**



1 x 2.5 gal Weather Gard Complete



3¹/₃ x 51 lb Bags of AMS

ALWAYS READ AND FOLLOW LABEL DIRECTIONS

INTIMIDATOR[®]

Intimidator[®] for Soybeans.
Put the brakes on weeds before they start.



Intimidator gives weeds 3 reasons to be intimidated.

It's a pre-emerge soybean herbicide with 3 modes of action. Intimidator provides both superior control of over 50 annual grasses and broadleaf weeds and resistance management in one convenient product. Plus you get flexible application timing, one-pass convenience with your burn down program and more, all for greater soybean yield potential.

Contact your local Nutrien Ag Solutions dealer to learn more about Intimidator.

Nutrien
Ag Solutions™



Crop Protection



DOUBLE HEADER[®] Corn Herbicide is a unique combination product delivering burndown & excellent residual activity on a broad spectrum of weeds long into the growing season. With tank mix compatibility to customize weed control, DOUBLE HEADER offers the flexibility of being applied both pre & post emergent.

GROWER BENEFITS:

- Excellent knockdown & residual control of grass and broadleaf weeds
- Convenience to suit different management programs
- Provides flexibility to customize weed control
- Management tool to fight resistant weeds

RATES:

2 qt/A

ACTIVE INGREDIENTS:

Mesotrione, Acetochlor

FEATURES:

- Broad Spectrum weed control
- Pre and Post emergence application timing
- Tank mix compatibility with atrazine, glyphosate & other herbicides
- 2 active ingredients with 2 modes of action

ADJUVANT RECOMMENDATION:





MAKAZE® is a fully loaded glyphosate with LECI-TECH® Technology getting TO, ON & IN the plant, providing superior penetration into the leaf surface enabling greater uptake, translocation and rainfastness for a complete kill.

GROWER BENEFITS:

- The most complete kill
- Greater uptake, excellent rainfastness
- Provides reliable performance

RATES:

32 fl oz/A

ACTIVE INGREDIENTS:

Glyphosate

FEATURES:

- LECI-TECH® Technology, getting TO, ON & IN the plant
- Superior leaf penetration
- Excellent crop safety on all Roundup Ready crops

ADJUVANT RECOMMENDATION:



FORFEIT 280

FORFEIT® 280 non-selective herbicide provides fast control of both grass and broadleaf weeds (including weeds resistant to glyphosate and other herbicide classes) using a unique mode of action.

GROWER BENEFITS:

- Controls glyphosate, ALS and triazine resistant weeds
- Effective control of both grass and broadleaf weeds
- Flexibility with tank mix partners

RATES:

15-82 fl oz/A

ACTIVE INGREDIENTS:

Glufosinate

FEATURES:

- Great resistance management tool
- Broad spectrum weed control
- Excellent compatibility

ADJUVANT RECOMMENDATION:



ALWAYS READ AND FOLLOW LABEL DIRECTIONS



MATADOR[®]-S is a soybean pre-emerge herbicide that provides burndown and long lasting residual control of grass and broadleaf weeds. With 3 distinct modes of action, MATADOR makes an excellent resistance management tool and helps soybeans get off to a strong start.

GROWER BENEFITS:

- Broad spectrum weed control in one pass (both grass and broadleaf control)
- Burndown activity and long-lasting residual provides the best possible start for the crop
- Lower application rates compared to MATADOR

RATES:

1.2-3 pts/A

ACTIVE INGREDIENTS:

S-Metolachlor, Metribuzin, Imazethapyr

FEATURES:

- Unique formulation with 3 active ingredients, 3 different modes of action, from 3 different chemical classes:
 1. S-Metolachlor
 2. Metribuzin
 3. Imazethapyr
- More concentrated active ingredient

ADJUVANT RECOMMENDATION:



APPLICATION RATE RANGE

MATADOR[®]-S Rate	3 pt
S-Metolachlor (Dual[®])	1.33 pt
Metribuzin	5.9 oz
Imazethapyr (Pursuit[®])	3.94 oz

ALWAYS READ AND FOLLOW LABEL DIRECTIONS



INTENSITY ON[®]E is a powerful Clethodim that offers a quicker, more complete kill. INTENSITY ONE contains LECI-TECH[™] Technology getting TO, ON & IN the plant, providing improved cuticle and canopy penetration along with superior translocation and performance.

GROWER BENEFITS:

- The most complete kill
- Wide application window and excellent rainfastness
- Faster uptake, performance, reliability

RATES:

6-16 fl oz/A

FEATURES:

- LECI-TECH[™] Technology, getting TO, ON & IN the plant
- Better penetration of the cuticle and canopy
- Better translocation

ACTIVE INGREDIENTS:

Clethodim

ADJUVANT RECOMMENDATION:



APPLICATION RATE RANGES

GRASS SPECIES	WEED HEIGHT† (inches)	RATES (fl. oz/acre)
Volunteer Corn	Up to 12	6 - 12
Volunteer Corn	Up to 24	9 - 14
Volunteer Corn	Up to 36	12 - 16

† Weed height generally occurs between 3-leaf stage and tillering.

ALWAYS READ AND FOLLOW LABEL DIRECTIONS

INTIMIDATOR®

INTIMIDATOR® is a soybean pre-emerge herbicide with 3 modes of action for grass and broadleaf weed control. By providing excellent burndown activity and long lasting residual, INTIMIDATOR can fight resistant weeds and get soybeans off to a strong start.

GROWER BENEFITS:

- Broad spectrum weed control in one pass (both grass and broadleaf control)
- Burndown activity and long-lasting residual provides the best possible start for the crop
- Still able to apply Fomesafen post application

RATES:

2-4 pt/A

FEATURES:

- Unique formulation with 3 active ingredients, 3 different modes of action from 3 different chemical classes:
 1. S-Metolachlor
 2. Metribuzin
 3. Fomesafen
- Moderate fomesafen rate

ACTIVE INGREDIENTS:

S-Metolachlor, Fomesafen, Metribuzin

ADJUVANT RECOMMENDATION:



ACTIVE INGREDIENTS PER APPLICATION RATE

INTMIDATOR® Rate	Dual Magnum®	Metribuzin	Fomesafen	Additional Top Gun® post app
2.0 pt	0.88 pt	4.0 oz	.67 pt	12.0 oz
3.0 pt	1.33 pt	6.0 oz	1.00 pt	8.0 oz
4.0 pt	1.77 pt	8.0 oz	1.33 pt	2.5 oz

ALWAYS READ AND FOLLOW LABEL DIRECTIONS



SABER® is a 4 pound 2,4-D Amine formulation with a glycol base that keeps the active ingredient in soluble form longer, resisting evaporation and boosting uptake.

GROWER BENEFITS:

- When applied to the leaf surface, SABER remains in a liquid form longer allowing for greater uptake
- When compared to other 2,4-D amine formulations, SABER proves to be less volatile and therefore more versatile
- Flexibility and reliability

RATES:

8-32 oz/A

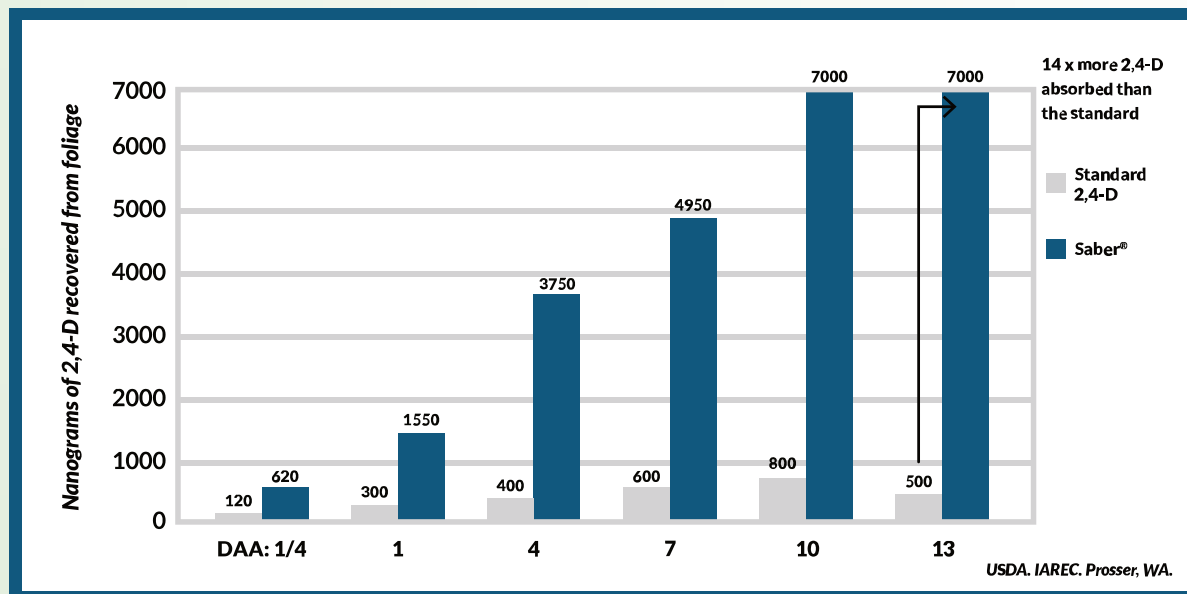
FEATURES:

- Glycol formulation
- Less volatility
- Excellent compatibility and crop safety

ACTIVE INGREDIENTS:

2,4-D Amine

ADJUVANT RECOMMENDATION:



ALWAYS READ AND FOLLOW LABEL DIRECTIONS

SALVO®

SALVO® is a premium 5-pound ester with a unique emulsification system that allows for more 2,4-D particles per droplet and better compatibility with tank mix partners.

GROWER BENEFITS:

- Particularly important for performance and compatibility
- Better coverage, penetration, uptake, and performance
- Versatility and reliability

RATES:

6.4-12.8 oz/A

FEATURES:

- A superior emulsion created when SALVO is added to the spray tank
- Smaller AI particle size (not droplet size) than other esters
- Broad spectrum weed control

ACTIVE INGREDIENTS:

2,4-D Ester

ADJUVANT RECOMMENDATION:

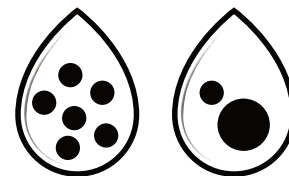


APPLICATION RATE RANGE: 6.4-12.8 oz/A

Refer to the label for specific crop and application rates, directions, mixing instructions and use precautions.

Product	Avg Particle (Micelle Diameter Microns)	Number of Particles per volume (approx)
Salvo®	5.89	5X
LV4	8.21	1.5X
LV6	9.66	1X

Particle size comparison within the droplet



SALVO VS LV6

- Improves penetration
- Improves uptake
- Improves performance

ALWAYS READ AND FOLLOW LABEL DIRECTIONS

SNIPER®



SNIPER® is a highly effective insecticide/miticide that controls over 30 foliar and soil borne pests. SNIPER gives growers the flexibility and residual activity needed to combat insects in conventional or biotech systems. ‡

GROWER BENEFITS:

- Controls over 30 chewing, sucking and flying pests
- Longer period of insect control

RATES:

Apply 1.3-6.4 oz/A

ACTIVE INGREDIENTS:

Bifenthrin

FEATURES:

- Broad spectrum pest control
- Sustained insecticide performance

ADJUVANT RECOMMENDATION:



ALWAYS READ AND FOLLOW LABEL DIRECTIONS

Restricted Use Pesticide



SWORD[®] is a concentrated, premium MCPA herbicide that controls a wide range of broadleaf weeds for small grains, flax, rangelands, pastures, turf and non-crop uses.

GROWER BENEFITS:

- Requires less product per acre, reduced handling, and less storage
- Can be applied from 3 leaf to boot stage in Wheat, Barley & Rye
- Easily mixed with nutritional, insecticides, & other herbicides
- 1 hour Rainfast time
- Over 105 broadleaf weed species controlled or suppressed

RATES:

0.33-1.0 pts/A

ACTIVE INGREDIENTS:

MCPA

FEATURES:

- Concentrated formulation
- Wide use window in crop
- Comatible with many tank mix parterns
- Fast uptake into the leaf
- Broad spectrum weed control

ADJUVANT RECOMMENDATION:





Labeled for the following applications:






Foliar



In-Furrow

Strengthen roots. Promote bigger, higher-quality yields.

Radiate, applied foliar or in-furrow, is a patented formulation of IBA and Kinetin that helps develop longer, stronger, healthier roots to improve nutrient uptake.

-  Enhance early season vigor.
-  Drive maximum root growth in row crops.
-  Get consistent performance and an undeniable advantage over an untreated control with Radiate's proven technology.

“What growers like most about Radiate is that it **offsets the stresses caused by weather**, and it **promotes a vigorous response** after various applications.”

—ROBBIE SCARBOROUGH, JR.
CROP CONSULTANT
BOYCE, LAJ

Nutrien
Ag Solutions™



Plant Nutrition

BLACKMAX[®] 22



BLACKMAX[®] 22 is a nutritional enhancement tool designed to positively impact nutrient availability and support positive soil attributes. As part of a fertilizer program the C² Technology in BLACKMAX 22 can give growers more nutrition for their crops and provide a better soil environment in which to grow.

GROWER BENEFITS:

- Enhanced existing nutrient mineralization and nutrient solubility
- Designed to promote beneficial microbes to drive soil process that make nutrition move available to the growing crop
- Sound, efficient, flexible formulation

RATES:

Soil: 0.5 to 4 gal/A In Line or banded per application. Foliar: 1 to 12 qts/A per application.

FEATURES:

- C² Technology to enhance applied nutrient availability and uptake
- Contains extracted carbon and a carbohydrate package for nutrient chelation and soil amendment properties
- Sound, efficient formulation compatible with many fertilizers

ANALYSIS:

0-0-4 with C² Technology

What is C² Technology?

C² is a proprietary technology consisting of extracted Carbon and Carbohydrate reacted with nutrients for improved Soil Health and Plant Performance.

Carbon: Increases nutrient availability by fostering growth of beneficial soil microbes and positively impacting soil attributes creating better holding capacity for nutrients and water

Carbohydrate: Improves nutrient uptake and availability in both soil and foliar applications



ALWAYS READ AND FOLLOW LABEL DIRECTIONS



Circa® ZMB is from our line of concentrated liquids specifically designed for coating prilled and granular fertilizers with micronutrients. Circa micronutrients allow for accurate and reliable access to essential soil applied micronutrients to support yield and quality. Circa ZMB pairs with your dry N, P or K applications for a flexible whole acre fertility solution designed around your farm's needs.

GROWER BENEFITS:

- Convenient and efficient way to address early season Zinc, Manganese and Boron needs in many crops where liquid injection isn't an option
- Distribution and efficiency is maximized by the micronutrient being coated on each piece of dry fertilizer applied
- When paired with Titan XC, Circa allows for a high efficient and completely customized dry fertilizer program

RATES:

Up to 160 fl. oz/ton of dry fertilizer

FEATURES:

- Designed to coat all types of dry fertilizers for maximum distribution across the acre
- Highly concentrated formulations deliver high levels of key nutrients
- Compatible with Titan® XC and other nutrient use efficiency tools for an advanced approach to dry fertilizer

ANALYSIS:

1-0-0 16%Zn 8%Mn 4%B



EXTRACT Powered by Accomplish® is a Loveland Products proprietary blend of proven fertilizer biocatalyst — ACCOMPLISH LM and a nitrogen source, designed to help growers not only manage crop residue but also easily and effectively optimize the release of nutrients from residue and those in the soil.

GROWER BENEFITS:

- Promote release of nutrients trapped in residue or bound in soil
- Extend existing nutrient availability later into the season
- Optimize plantability in the spring
- More even crop emergence
- Improve yield potential

RATES:

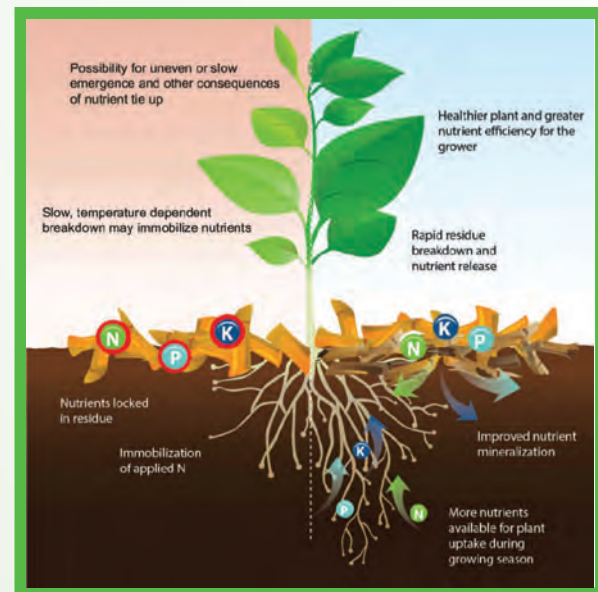
1-2 gals/A

ANALYSIS:

6-0-0 13%S

FEATURES:

- Labeled for pre-emerge and residue management applications
- Can be tank mixed with herbicides for fall or spring burndown
- Compatible with liquid fertilizers for spring broadcast



ALWAYS READ AND FOLLOW LABEL DIRECTIONS



NITRAIN™ EXPRESS is a Loveland Products proprietary product containing a unique mix of NBPT, and fertilizer biocatalyst technology similar to that found in ACCOMPLISH® LM. NITRAIN EXPRESS reduces volatility by inhibiting the activity of the urease enzyme. Urease is a naturally occurring enzyme in the soil responsible for breaking down urea when moisture and organic matter are present. Up to 40% of nitrogen can be lost to volatilization within hours of application.

GROWER BENEFITS:

- Prevents the volatilization of both UAN and Urea fertilizer applications
- Increases the efficiency and utilization of nitrogen and other key nutrients
- Maximizes yield in many different crops

FEATURES:

- Built on a reliable platform of NBPT chemistry
- Contains biochemical fertilizer catalyst technology similar to that found in Accomplish LM

RATES:

3 qts/ton of Urea; 1.5 qts/ton of UAN

Urea Volatilization Demonstration



IMMEDIATELY FOLLOWING APPLICATION

No ammonia loss detected by Dräger tube



48-HOURS AFTER APPLICATION

Significantly less N loss with Nitrain™ Express® as demonstrated by lower amount of ammonia detected by Dräger tube

ALWAYS READ AND FOLLOW LABEL DIRECTIONS

NutriSync[®] Boron

NUTRISYNC[®] BORON (0-0-0 5B) is a unique liquid foliar nutritional designed to enhance the physiological activity and growth of crops that demand Boron. This enhanced nutrient technology helps plants more efficiently mobilize and utilize applied nutrients as well as those that are already within the plant -enhancing crop growth throughout the season.

GROWER BENEFITS:

- Enhances nutrient uptake and mobilization
- Greater boron utilization
- Promotes healthier plants, more consistent quality and higher yield potential
- Optimized for the needs of boron critical crops
- Wide window of application timing and performance

RATES:

1-6 pts/A for most crops

ANALYSIS:

0-0-0 5B

FEATURES:

- Wide window of application timing and performance

ALWAYS READ AND FOLLOW LABEL DIRECTIONS



NUTRISYNC® COMPLETE (10-7-4 WITH MICROS) is a fully formulated foliar nutrition tool powered by NutriSync proprietary nutrient transport technology and contains key plant major and micronutrients. NutriSync technology has been shown to improve nutrient assimilation, mobilization and utilization - critical to promote nutrient transport to areas of vigorous growth providing better utilization of nutrients to fulfill plant demands.

GROWER BENEFITS:

- Enhances nutrient uptake and mobilization
- Greater nutrient utilization through balanced nutrition
- Promotes healthier plants, more consistent quality and higher yield potential

RATES:

1-6 pts/A for most crops

ANALYSIS:

10-7-4 WITH MICROS

FEATURES:

- Built with NutriSync Nutrient Transport Technology
- Contains highly available zinc, manganese, copper, iron, and boron for balanced foliar nutrition
- Wide window of application timing and performance

NutriSync® Sulfur

NUTRISYNC® SULFUR (6-0-0 6.3S) is a unique liquid foliar nutritional designed to enhance the physiological activity and growth of crops where Sulfur is critical to yield and quality. This enhanced nutrient technology helps plants more efficiently mobilize and utilize applied nutrients as well as those that are already within the plant - enhancing crop growth throughout the season.

GROWER BENEFITS:

- Highly available form of sulfur
- Enhances nutrient uptake and mobilization
- Greater sulfur utilization
- Promotes healthier plants, more consistent quality and higher yield potential
- Wide window of application timing and performance

RATES:

1-8 pts/A for most crops

ANALYSIS:

6-0-0 6.3S

FEATURES:

- Built with NutriSync Nutrient Transport Technology
- Optimized for the needs of crops demanding sulfur for yield and quality
- Wide window of application timing and performance

ALWAYS READ AND FOLLOW LABEL DIRECTIONS

Radiate®



RADIATE® is a patented formulation of IBA & Kinetin, in optimized ratios, to enhance early season vigor and drive maximum root growth. The proven technology in Radiate provides Growers consistent performance across a wide variety of crops.

GROWER BENEFITS:

- Promotes vigorous root and shoot growth in all crops
- Larger root system is able to access more soil for increased uptake of key nutrients and water
- Improves early season vigor and reduces the negative effects of stresses experienced during the growing season

RATES:

Foliar Applied: 2 fl. oz/A; Banded or In-furrow: 4 fl. oz/A

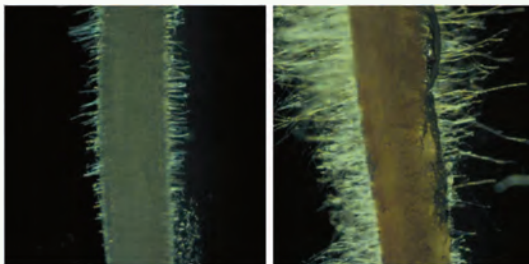
FEATURES:

- A patented combination of IBA and Kinetin in an optimized balance of root and shoot growth
- Flexible formulation is labeled for both in-furrow and foliar applications
- Compatible with most fertilizers and pesticides for upmost flexibility in tankmix partners

ACTIVE INGREDIENTS:

IBA (Indole-3 Butyric Acid) & Kinetin

Radiate's Effect on Root Hairs

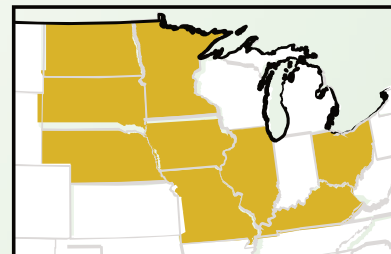
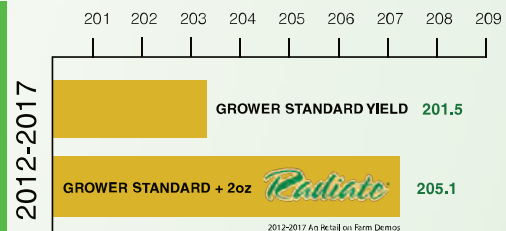


UNTREATED

VS.

RADIATE®

67 CORN TRIALS



ALWAYS READ AND FOLLOW LABEL DIRECTIONS

Plant Health Stimulants are active ingredients that have a positive effect on plant health. They are typically applied in low quantities to mimic or enhance a plant's metabolism.



RISER® (7-17-3 + MICROS) is a low salt, seed safe, highly pure pop-up in furrow starter fertilizer contains ACA® Technology and micronutrients. These ingredients provide essential nutrients for optimizing seeding vigor, plant health and crop yields.

GROWER BENEFITS:

- Phosphate and key micros drive growth and metabolism in many crops
- Drives early season plant vigor
- Increases rootmass and nutrient uptake

RATES:

Cereal Grains: Soil: 1-5 gal/acre in-furrow or 2x2. Foliar: 2-4 qts/acre;
Specialty Crops: Soil: 2-8 gals/acre.
Foliar: 1 gal/acre

FEATURES:

- High quality pop-up fertilizer
- Excellent crop safety
- Low salt blend that's seed and root zone safe
- Utility across a broad range of crops

ANALYSIS:

7-17-3 + MICROS



Enhances nutrient efficiency through increased root interception

Promotes nutrient solubilization



Allows for nutrition to be placed in optimal location for early season uptake

Decreases chance of seedling injury



Balanced micronutrient mix to drive growth and development

Includes micronutrients that are key to activating other major nutrients

ALWAYS READ AND FOLLOW LABEL DIRECTIONS



Get more from every dry fertilizer application with **TITAN XC**. Specifically formulated for impregnation on dry fertilizer blends, TITAN XC is the key to quick release and uptake of vital plant nutrients. The unique and concentrated biochemistry in TITAN XC provides the broadest range of activity to maximize the return on your dry fertilizer investment.

GROWER BENEFITS:

- Expedites nutrient availability and uptake
- Enhances nutrient use efficiency
- Promotes better root growth and development
- Optimizes yield potential

RATES:

16-32 oz/ton of dry fertilizer

FEATURES:

- Extra concentrated formulation for superior impregnation on fertilizer prill
- Consistent performance across plant and soil types
- Compatible with a variety of dry fertilizer blends (P & K, MESZ, MES, pell lime, sulfate of potash, ammonium sulfate, gypsum)

I Grower Standard

1. Untreated fertilizer applied to soil
2. Less breakdown of dry fertilizer
3. Fewer nutrients taken up into plant

I Treated with Titan[®] XC

1. Dry fertilizer treated with Titan XC applied to soil
2. Titan XC accelerates the breakdown of dry fertilizer
3. More nutrients available sooner
4. More nutrients "captured" by plant

ALWAYS READ AND FOLLOW LABEL DIRECTIONS



GET GROWING.

 @LOVELANDPRODUCTS

 @GROWLOVELAND

 @LOVELANDPRODUCTS

LOVELAND PRODUCTS, INC.®
P.O. BOX 1286 | GREELEY, CO 80632
www.LovelandProducts.com

ALWAYS READ AND FOLLOW LABEL DIRECTIONS.

© 2021 Loveland Products, Inc. All Rights Reserved.

All of the trademarks and service marks displayed are marks of their respective owners.

Check State Registration to make sure product is registered in your state.